

PERFECT™
SILK
LASHES
BY ANETE STEINA

SEDUCTION
AT FIRST GLANCE



Brand **Perfect Silk Lashes™** is a leader in the professional high quality eyelash and eyebrow extensions.

Excellence and the avant-garde are the pillars of our company's philosophy.

We use **innovative technology**, exclusive materials and continually improve manufacturing of products.

The company was founded in 2007.

Thanks to the great efforts and continuous improvement of product quality it is now represented in many European countries. It is the trust-based relationships that we guarantee with our brand which are the most valuable thing we want to offer you.

A clear understanding that the world is changing rapidly, makes our company pay more attention to current trends and innovations. This contributes to the rapid development to meet the growing needs of our customers and allows us to be one-step ahead and accept new challenges. The main priority of our company is the **opinion of our customers**. We believe that only this will help us to fully meet the needs of the market.

What do we believe in

The main desire of **Perfect Silk Lashes™**:

APPRECIATE WOMAN AND EXALT HER BEAUTY.

We believe that a woman takes the central place in society and family; she is the source of love, ideas, and strength.

We take care of women, starting with the health of their skin and ending with the beauty of the eyes.

To ensure the quality and safety of each product, we conduct rigorous tests per legislation approved methods and without the use of animals. Our eyelashes are gentle and hypoallergenic, as close as possible to natural in their structure and shape.

We support a woman, offering her a handy tool to improve the appearance, which in turn contributes to self-confidence.

We attract a woman's attention, creating unique quality materials characterized by simplicity and ease of use.

We protect women; belief in their rights and freedoms. We do this to support the associations that combat violence and discrimination of women all over the world.

What are eyelash extensions?

Before **Perfect Silk Lashes™**, the decoration of eyelashes was carried either with cluster extensions (Flare) or with the tape (Decorative Lashes) directly applied on the eyelid, but those eyelashes lasted for 1-3 days. Now, thanks to the technique of **Perfect Silk Lashes™**, it is possible to glue artificial cilia directly to natural ones. The appearance of the technique has been inspired by a traditional technique "**One by One System**", when one natural cilia was extended with one artificial, and the newest advanced technology "**Volume System**" with gluing up to eight artificial cilia on one natural.

How long do extended lashes last?

The normal duration is the life cycle of natural eyelashes. It is considered to be dependent on personal characteristics – **from 2 to 3 months**. However, it is recommended to have correction once every 4 weeks – it is perfect to maintain and ensure the optimal result



OUR LINES



MINK LINE

VOLUME SYSTEM

THE POWER OF SEDUCTION

MINK Line - Volume System from the Perfect Silk Lashes™ a professional line, specially developed for the method of semi-permanent lash extension **“Volume System”**.

This method allows achieving an incredible volume effect as you are gluing two or more lash extensions with one natural lash. The result remains on the eyelashes **from 2 to 3 months**.

The eyelashes become thick and lush, creating a unique look. The result is a stunning, eye-catching look, emphasizing beauty.



Perfect ease

MINK Line - Volume System - a special lash extension line. Tufts are soft and flexible, very light and super thin, just repeating the shape of the natural eyelashes. These characteristics makes them ideal for “*Volume System*”, it is possible to glue several lash extensions of the natural one without weighing and retaining a natural feeling while you are moving the eyelid.

The secret is in a special hypoallergenic formula containing a **component of silk**. This distinguishes lashes of *MINK Line* from synthetic eyelashes, very common on the market.



MINK LINE
ONE by ONE

THE STRENGTH OF YOUR BEAUTY

MINK Line - One By One System from the Perfect Silk Lashes™ - professional line specifically designed for semi-permanent lash extensions.

"One by One System" is based on a method of gluing a single artificial lash to the natural one. The result lasts for the life cycle of natural eyelashes, **from 2 to 3 months**. This creates a natural and at the same time slightly glamorous effect.

Technique follows the eye line, emphasizing the natural beauty of the look and makes it more expressive.



Natural effects

A special **Perfect Silk Lashes™** extension system creates a natural look due to the precise repetition of the natural eyelash forms.

Smooth and incredibly thin.

The secret is in a special hypoallergenic formula containing a component made from the silk. This distinguishes **Perfect Silk Lashes™** from the synthetic eyelashes, which are very common on the market.

Easily and naturally repeating the form of natural lashes, does not weigh down the eyelids.



**SILK
LINE**

MAKE YOUR EYES SHINE

SILK Line - One by One System from the **Perfect Silk Lashes™** - a professional line specifically designed for semi-permanent eyelash extension technique **“One by One System”**.

The natural effect with a moderate luster of silk gives the look a depth.



The incredible thinness and fixation

Professional eyelashes extension lines **SILK Line - One by One System** from the **Perfect Silk Lashes™** - smooth and extremely thin and natural effect.

Elastic and hypoallergenic glue ensures long-lasting hold, resistant to water and heat.

You can feel relaxed and at ease in any situation, without worrying about extensions throughout the life cycle of natural lashes.

Endless possibilities for expressive look

You can choose the style of lash extensions, the most appropriate to your individual and facial features **One by One System** from the **Perfect Silk Lashes™** from the professional **SILK Line**.

Eyelashes **Perfect Silk Lashes™** opens limitless possibilities to create the ideal image through a wide range represented in a variety of shapes, sizes, and colors.

SHAPES



I-type

single bunch for extension - for eyelashes lengthening



Y-type

Double bunch for extension – to give the density to eyelashes



W-type

Triple bunch for extension – to increase the volume of eyelashes

CURL



J-curl

Eyelashes for extension with **minimal curl**. Usually used for gluing on the inside of the eyelid or for combining with other types of eyelashes.



B-curl

Eyelashes for extension with **light curl**. Ideal for creating the most natural look.



C-curl

Frequently used for eyelash extension. **Light curl** in the place of attachment and on the tips creates an attractive and natural look.



D-curl

Eyelashes for extension with a **pronounced curling line** to create a determined and demanding look.

THICKNESS



0.05 mm



0.07 mm



0.12 mm



0.15 mm



0.20 mm



0.25 mm

LENGTH



6 mm



7 mm



8 mm



9 mm



10 mm



11 mm



12 mm



13 mm



14 mm



15 mm



NATURAL COLOR

Natural color eyelashes for extension.

Color: black

Length: All

Curl: All

Thickness: All



TWO TONES

Eyelash for extension with a gradient transition from dark to colored.

Colors: green, blue, violet, brown, red.

Length: 8, 9, 10, 11, 12, 13 mm

Curl: C

Thickness: 0,15 mm



COLOR FANTASY

Color eyelashes for extension.

Colors: green, blue, violet, brown, red

Length: 8, 9, 10, 11, 12, 13 mm

Curl: C

Thickness: 0,15 mm



GLITTERING SPANGLES

Color eyelashes for extension with spangles.

Colors: green, blue, violet, brown, red

Length: 8, 9, 10, 11 mm

Curl: C

Thickness: 0,15 mm

Colors



BLACK

Natural color eyelashes
for extension with shine.

Length: All

Curl: All

Thickness: All



BLUE

Blue color eyelashes
for extension with shine.

Length: 10, 13 mm

Curl: J

Thickness: 0,12 mm



BROWN

Dark-brown color eyelashes
for extension with shine.

Length: 12 mm

Curl: J

Thickness: 0,15 mm



GOLDEN

Golden color eyelashes
for extension with shine.

Length: 12 mm

Curl: J

Thickness: 0,15 mm



GREEN

Green color eyelashes
for extension with shine.

Length: 10, 13 mm

Curl: J

Thickness: 0,12 mm



PINK

Pink color eyelashes
for extension with shine.

Length: 12 mm

Curl: J

Thickness: 0,12 mm



RED

Red color eyelashes
for extension with shine.

Length: 10, 13 mm

Curl: J

Thickness: 0,12 mm



VIOLET

Violet color eyelashes
for extension with shine.

Length: 10, 13 mm

Curl: J

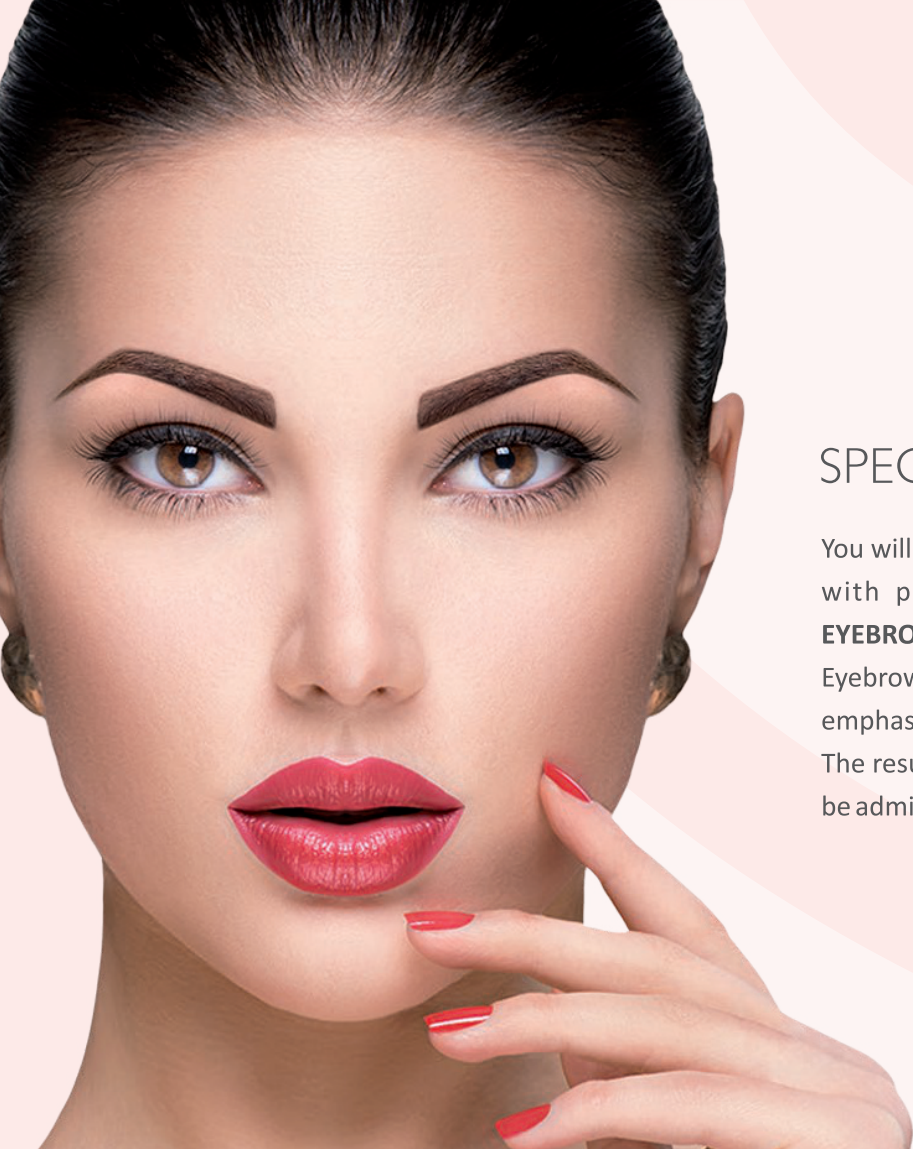
Thickness: 0,12 mm



Endless flapping of eyelashes

Thanks to the special **PSL™** glue, you can have really semi-permanent long eyelashes. The exclusive composition of the glue **ensures excellent adhesion, maximum elasticity and incredible resistance to water and heat.**

You will be able to feel secure and at ease in any situation, without worrying about the durability of extensions throughout the life cycle of natural eyelashes.



EYEBROW LINE

SPECTACULAR VIEW

You will be able to give an expressive and bright look with professional eyebrow extension system **EYEBROW Line** from the **Perfect Silk Lashes™**.

Eyebrows become more denser and lush and gently emphasize the natural shape of the eyes.

The result is a determined and delicate look that will be admired.



Natural
beauty

You can choose the extension style, the most appropriate to your individuality and facial features with professional extension system **EYEBROW Line** from the **Perfect Silk Lashes™**.

Extensions of **EYEBROW Line** are close to natural color, curl and thickness; they are thicker with the root and thinner at the ends.

PERMANENT EYELASH

ELEGANT BEAUTY

Using set for eyelash curling of the **Perfect Silk Lashes™** you can achieve an incredible look of your eyelashes in 40 minutes. It is recommended to carry out the curling before the extension procedure. The result lasts for **more than 2 months**.



The volume you want

Using semi-professional **INDIVIDUAL Line**, you can choose the perfect volume, emphasizing your eyes, choosing between the different types of available beams or mixing them together.



TYPES OF BUNCHES



Single
3 eyelashes



Flare
5 eyelashes



Flare Double Density
10 eyelashes



Flare 3D
15 eyelashes

LENGTH



Short Under
Short tufts for the lower lashes



Short
Short tufts



Medium
Medium length tufts



Long
Long tufts



INDIVIDUAL LINE

BEAUTIFUL, IN A BLINK OF AN EYE

You can make your eyes more expressive and improve your appearance in minutes with beam eyelashes of semi-professional **INDIVIDUAL Line** from the **Perfect Silk Lashes™**.

Due to the special glue **Quick&Strong™**, *INDIVIDUAL Line* eyelashes are easily applied to the lid.

Extension wearing time from 1 to 3 days, but you can easily remove them at any time.



Decorative
lashes
with feathers

Eyelashes are available in all shapes and colors. **Decorative Eyelashes** are perfect for filming, stage make-up, or to create a unique image for a particular event.



DECORATIVE LINE

PERFORMANCE ON YOUR EYES

STRIP Line - Decorative Lashes of **Perfect Silk Lashes™** - is unprofessional lash line. They are easy to fix and after the usage is easy to remove. They can be reused. These lashes are made from synthetic fibers, they are light and comfortable.

AFTER CARE



PSL™ PROTELIFT™ EYE PATCH – anti-aging patches that are specially designed for eyelash treatments and self-application. *PROTELIFT™ Eye Patch* reduces the appearance of wrinkles and puffiness in the eye area.



SAVELASH™ EYE MAKE-UP REMOVER has an effective cleaning action, which does not irritate the skin, it is specially designed for frequent use. Its gentle formula provides the face with a pleasant feeling of freshness and deeply cleans the skin.



PSL™ EXTRA FIXING GEL - this is a gel that is specifically designed for both natural lashes and lash extensions as well as for eyebrows. The non-irritating formula for *PSL™ Extra Fixing Gel* does not contain alcohol and fragrances, improves the structure of the eyelashes and eyebrows, ensures a longer period of wearing eyelash extensions, providing volume and length, as well as fixing the curve.



CURLY BLACK MASCARA is specially designed for natural lashes and eyelash extensions. It's creamy texture is easy to apply, covers the lashes, separates them, and prevents dryness of eyelashes. *PSL™ Curly Black Mascara* has the feature to increase the time of wearing eyelash extensions.



HEATED EYELASH CURLER
Multifunctional electric heated eyelash curlers Curler is a worthy alternative to the traditional eyelash curler that allows quickly and easily curl eyelashes achieving a natural effect.

TOOLS

Perfect Silk Lashes™ offers a wide range of innovative professional tools and accessories specially designed for extensions with maximum precision and comfort.





www.perfectsilklashes.eu

Perfect Silk Lashes™
brand distributor



GALATEJA SIA
Dzirnavu str. 102, Riga,
LV-1050, Latvia

customer service
+371 67285332
info@perfectsilklashes.eu